



ADELE VAN HEERDEN

infinite detail

04.07.21 - 03.08.21

Adele van Heerden pays close attention to complexity. As an artist and curator living in a world where the binary has been replaced by the spectrum, Van Heerden revels in the beauties of the multifarious, creating intricate pieces in ink and gouache on drafting film which juxtapose the natural world with human-made structures and urban scenes. Based in Cape Town, South Africa, she produces finely detailed, often layered work as a personal response to the particular social, historical and political conditions she finds herself in.

Her subject matter is an exploration of the present and a confrontation with the weight of the past, combining the botanical, urban, historical and natural in a way which engages with scale to question relevance. She is particularly interested in human-made spaces which work in symbiosis with greenery and plants.

Having studied curatorship at a graduate level allows Van Heerden to bring ideas from both of her undergraduate fields of study – fine arts and history/politics – together in her fine arts practice. After graduating with a degree in Fine Arts from the Ruth Prowse School of Art in 2010, Van Heerden continued her studies at the University of South Africa, obtaining a BA in History and Politics. In 2015, she graduated from the University of Cape Town with an Honours Degree in Curatorship.



photo by
Bernard Brand



CryptoKittie

2021
Ink and gouache on drafting film
82.7cm x 60cm (framed)

R 14 500-00



Leaves Against The Sky

2021
Ink and gouache on drafting film
59cm x 40.5cm (framed)

R 8 000-00



Orchid Show

2021

Ink and gouache on drafting film
41.5cm x 60cm (framed)

R 8 000-00



Points Of Interest

2021
Ink and gouache on drafting film
85.7cm x 120cm (framed)

R 19 500-00



Detail of *Points Of Interest*





Rocher Canon

2021

Ink and gouache on drafting film
35.7cm x 48cm (framed)

R 7 000-00



Secret Garden

2021

Ink and gouache on drafting film
42cm x 59.5cm (framed)

R 8 000-00



Detail of *Secret Garden*



Still Life For A Pandemic

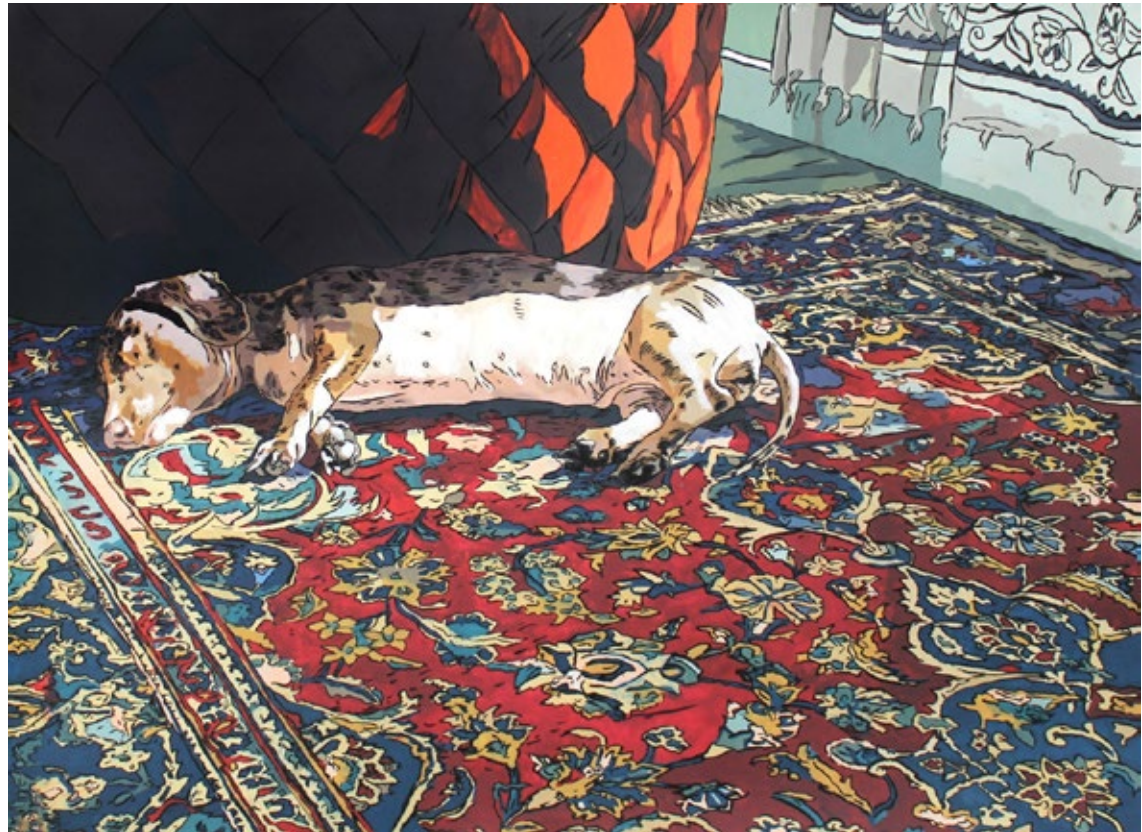
2021
Ink and gouache on drafting film
41cm x 57.5cm (framed)

R 8 000-00

Minu

2021
Ink and gouache on drafting film
41.5cm x 55cm (framed)

R 8 000-00





Detail of *Minu*

The Secret Lives Of Plants I

2021
Ink and gouache on drafting film
85cm x 61cm (framed)

R 14 500-00





The Secret Lives Of Plants II

2021
Ink and gouache on drafting film
82cm x 61cm (framed)

R 14 500-00



Detail of *The Secret Lives Of Plants II*





The Yogini's Watchdog

2021
Ink and gouache on film
61.3cm x 84.7cm

R 14 500-00

infinite detail



Urban Oasis

2021

Ink and gouache on drafting film
68.5cm x 101.5cm (framed)

R 18 500-00





Home Away From Home

2021

Ink and gouache on drafting film

68.5cm x 101.5cm (framed)

R 8 000-00





Before Sunset

2021
Ink and gouache on drafting film
60cm x 84.4cm (framed)

R 14 500-00

LIZAMORE

& Associates

CONTEMPORARY ART GALLERY AND CONSULTANCY



Lizamore & Assoc. Gallery | @lizamoregallery



Lizamore & Assoc. | @lizamoregallery



Lizamore & Assoc. Gallery | @lizamoregallery